

/2014 4:05:03 PM

# Merge Cardio 12.5

# Merge Cardio

Many of the challenges you face in your cardiology department can be solved by staying up-to-date with the latest version of Merge Cardio. Upgrading to the latest version gives you the benefits of new, optimized cardiology workstation measurements and improved partner integrations.

With your Merge Cardio 12.5 upgrade, you will gain:

## AI-generated echocardiogram measurements

Discover a more consistent measurement experience with Us2.ai, a new partnership with Merge Cardio.

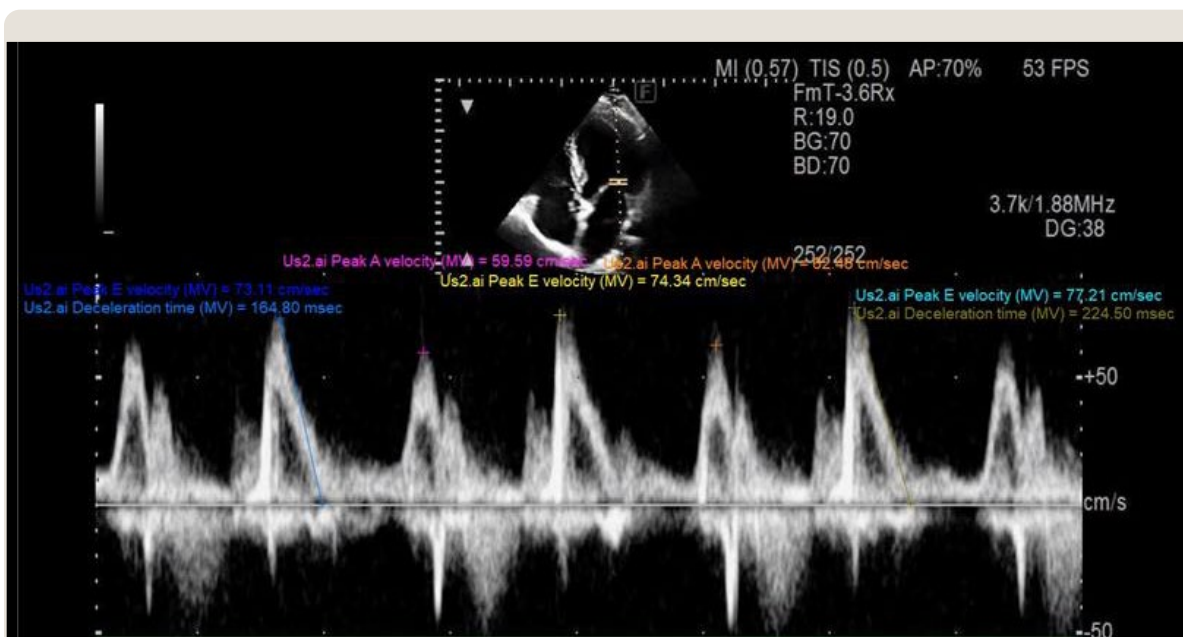
- AI algorithms that automatically detect a broad range of echo parameters, including strain measurements
- Additional reimbursements for Heart Failure with Preserved Ejection Fraction (HFpEF)
- Enhanced workflows with color-coded icons to indicate measurement origination
- Seamless integration into clinical workflows
- Potential to reduce end-to-end exam time by 9 minutes per study\* and increase efficiency to help create opportunity for higher daily study volume

## Optimized workstation measurements

- Streamline your measurement process and enhance clinician workflows with new, intuitive measurement functionality.
- Enhanced confidence in clinical outcomes with timely evaluations and consistent clinical reporting
- Enhanced measurement capabilities including adjustable measurements to allow for later modifications
- Instant updates to reports and calculations, with no extra steps needed – easily add, delete, or resize points on tracings for volumes, areas, and VTIs
- Reorganized measurement panel with standardized branches for easier navigation and fewer clicks

## Improved integrations for seamless compatibility

- Take advantage of all the latest upgrades and enhancements from certified Merge Cardio partners.
- Parks and Unetixs vascular mapping
- Baxter cardio server study context launch
- Invia 4DM v2025, including measurement mapping into the report
- Clinical reporting v9.5 providing the capability to launch corresponding image from Us2.ai measurements
- M Modal to allow a user to use speech mics to dictate into free text boxes of structured reporting
- SQL 2022 will be supported in addition to maintaining SQL 2019, Windows server 2019 and 2022 and Windows 10 and 11



# The evolution of Merge Cardio

More often than not, continuing to use older software means missing out on superior technology. For Merge Cardio in particular, staying with the status quo means passing up features that could make a positive impact on patient care and clinical workflows, potentially costing you time and money. Review Merge's timeline for upgrades that you could be leveraging today from previous releases.

## Cardio 12.5

- Us2.ai enhanced workflow
- Intuitive measurement functionality
- Enhanced adjustable measurements
- Anatomical organization of measurements
- Significant improvements to partner integrations

## Cardio 12.4

- Increases vertical real estate in the workstation for optimized image visualization
- Features easy-to-use keyboard shortcuts in the Merge Cardio workstation
- Supports modern web browsers and Windows 10 and 11
- Introduces Merge Cardio Web Image Viewer with dual monitor support for remote reading
- Adds the all new Analytics by Merge Cardio for seamless data query from premiere business intelligence tools
- Leverages structured reporting enhancements across specialties through the new clinical reporting version 9.0
- Automated data mapping from Philips XPER hemodynamics device

## Cardio 12.3

- Updated Tissue doppler labels to reflect ASE
- Improved Biplane Simpson's Workflow
- Correction for notification handling when editing study information
- CAS performance enhancements when deleting large notifications from EA

## Cardio 12.2

- Personnel search criteria enhancement

## Cardio 12.1

- Customer tool for DICOM SR measurement mapping management
- Remote workstation deployment
- Epic Hyperdrive integration
- Data import notification during reporting session
- UI rewrite with new diagrams
- ASE guidelines available in reporting

## Cardio 12.0

- Improved user interface
- Refresh of measurement functionality
- Custom measurements protocol saves measurement preferences per user

## Cardio 11.0

- Patient-centric view
- Enhanced clinical workflow capabilities
- Advanced analytics and reporting with stronger partner integrations
- Improved IT infrastructure

## Cardio 10.3

- View completed cardiology reports in Merge Universal Viewer
- Common archive/cache with other Merative products
- QC synchronization with Merge VNA, Merge PACS, and Merge Universal Viewer

## Cardio 10.2

- Maternal/Fetal MRN linking
- Study list filters for Merge Cardio web
- TOMTEC Streaming Interface
- Integration of new HL7 engine
- Multiple patient identifier support

## Cardio 10.1

- Improved scalability, performance, and stability
- Improved configurability and better workflow management
- Updates to CardioAnalytics data mining

## Cardio 10.0

- Improved functionality and database access
- Improved support for national registry reports
- Addition of voice recognition

## About Merge

Trusted by 6 of the 10 largest U.S. health systems, Merge by Merative empowers healthcare organizations with advanced medical imaging solutions to enhance workflows, optimize care delivery, and help improve patient outcomes. Merge's Imaging Suite, built on a cloud-native foundation, provides solutions for Vendor-Neutral Archive (VNA), PACS, Enterprise Image Viewing and Workflow Orchestration. Merge's portfolio also includes Best in KLAS Cardiology and Hemodynamic Monitoring, and Digital Pathology.

Learn more at [merative.com/merge-imaging](https://merative.com/merge-imaging)

## About Merative

Merative provides data, analytics, and software for healthcare and government social services. With focused innovation and deep expertise, Merative works with providers, employers, health plans, governments, and life sciences companies to drive real progress. Merative helps clients orient information and insights around the people they serve to improve decision-making and performance.

Learn more at [merative.com](https://merative.com)

© Merative US L.P. 2025. All Rights Reserved.

Produced in the United States of America  
October 2025

Merative and the Merative logo are trademarks of Merative US L.P. Other product and service names might be trademarks of Merative or other companies.

The information contained in this publication is provided for informational purposes only. While efforts were made to verify the completeness and accuracy of the information contained in this publication, it is provided AS IS without warranty of any kind, express or implied. In addition, this information is based on Merative's product plans and strategy as of the date of this publication, which are subject to change by Merative without notice. Nothing contained in this publication is intended to, nor shall have the effect of, creating any warranties or representations from Merative, or stating or implying that any activities undertaken by you will result in any specific performance results. Merative products are warranted according to the terms and conditions of the agreements under which they are provided.

VRCS-43174 Rev 1.0



---

## Learn how you can benefit

Merative provides award-winning enterprise imaging solutions for radiology, cardiology and orthopedics, using vendor neutral cloud and AI technologies to reduce workspace complexity and create seamless workflows.

Visit [our website](#) or [talk to an enterprise imaging solutions expert](#) to learn more about how Merative can help you.